

# Software Printers

## MultiLab® pilot communication Software

WTW software – simple and comfortable

MultiLab® pilot, the communication program specially created for inoLab® 740 and 750. For these instruments MultiLab® pilot is not just limited to comfortable on-line data transfer, but can also control the active multifunction box or the inoLab® and 750.

MultiLab® pilot can also be used to comfortable data transfer with the inoLab® 730, handheld meters MultiLine P3, P4 and 340/340i and other instruments.

**Digital on-line recorder**

**Export function for Word, Excel, Access and other programs**

**Free-of-charge download from the internet**



New: Adapter for USB to serial interfaces

### Minimum system requirements

Hardware:

- IBM-compatible PC with 486DX processor
- 8 MB RAM
- 20 MB free memory
- VGA/SVGA graphics board
- CD-ROM drive
- one free interface (RS 232) for each connected instrument

Software:

- Windows 95

MultiLab® pilot, the free-of-charge software package for all laboratory, handheld and field instruments, can be downloaded from the internet

“MultiLab® pilot” controls the measurement and carries out data transfer and storage. The data can be shown online as a table or graph or off-line transferred to a printer. The inoLab® 740 and 750 can be controlled active.

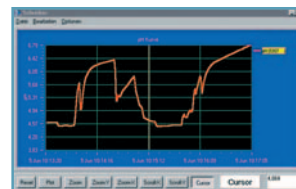
### Well laid out



All display modules are arranged as independent windows which can be moved about as required. Each window has its own menu bar with which settings for the measurement can be made quickly and conveniently. Additional graphic symbols, on-line help texts and a large measurement display round out the picture.

### Graphic

A comfortable digital recorder is used as a graphic support for data monitoring in real-time mode. Apart from zoom and scrolling functions, individual values can be displayed or limiting values laid down via the cursor.



### Instruments supported by the MultiLab® pilot

Instrument	Model Suitable accessories	Instrument	Model Suitable accessories
Cond 197i	b ④,⑤	Oxi 197	u ④,⑤
Cond 340i	b ④,⑤	Oxi 325	u ④,⑤
inoLab® 730	b ④	Oxi 340	b ④,⑤
inoLab® 735	b ④	Oxi 340i	b ④,⑤
inoLab® 740	f ④	Oxi 538	u ④,⑤
inoLab® 750	f ④	Oxi 597	u ④,⑤
inoLab® Level 2	b ④	pH 197i	b ④,⑤
inoLab® Level 3	f ④	pH 197	u ④,⑤
LF 197	u ④,⑤	pH 325	u ④,⑤
LF 325	u ④,⑤	pH 340	b ④,⑤
LF 340	b ④,⑤	pH 340i	b ④,⑤
LF 538	u ④,⑤	pH 340/ION	b ④,⑤
LF 597	u ④,⑤	pH 538	u ④,⑤
Multi 197i	b ④,⑤	pH/Cond 340i	b ④,⑤
MultiLine® P3 pH/LF	b ④,⑤	pH/ION 340i	b ④,⑤
MultiLine® P3 pH/Oxi	b ④,⑤	pH/Oxi 340i	b ④,⑤
MultiLine® P4	b ④,⑤		
Multi 340i	b ④,⑤		
Multi 350i	b ④		
Oxi 197i	b ④,⑤		

④ = AK 340/B  
⑤ = AK 325/S

b = bidirectional  
f = can be remote controlled  
u = unidirectional

For more information, please contact us:

ExpotechUSA  
10700 Rockley Road  
Houston, Texas 77099  
USA

281-496-0900 [voice]

281-496-0400 [fax]

E-mail: sales@expotechusa.com

Website: www.ExpotechUSA.com