

Operating Instructions for One- Liter Cream Whipper

Before using your cream whipper please read operating instructions carefully. Assemble the head according to the instructions for bottle assembling and dismantling.

Bottle Filling

1. Fill the prescribed amount of cooled whipped cream into the washed bottle (Max. 1 Liter- Min. 0.5 Liter)
2. Screw the assembled head on the bottle and tighten firmly.

Gas Admission

3. Insert the pressure gas cylinder (N2O) into the wing nut.
4. Screw the wing nut and gas cylinder assemble onto the head until gas is released. The initial gas penetration into the bottle is indicated by a hissing sound. The one liter bottle is filled with two gas cylinders. When the hissing stops, the bottle is full. By screwing the wing nut off, the rest of the gas will leak out. **USE ONLY TWO CHARGERS PER FILLING.** When the gas filling is completed, shake bottle briskly approximately 3-5 times.

Whipped Cream Discharging

5. To release whipped cream or dessert, hold bottle vertically, nozzle downwards, and press lever to dispense. If whipped cream is not firm enough, give the whipper another brisk shake.

Important Notice

1. Do not over fill the bottle
2. Never use more than two chargers (N2O) per filling.
3. If whipped cream (or gas) cannot be dispensed by valve, **DO NOT** dismantle the head without first discharging the gas. This can be done by loosening the admission valve (in advance you have to dismantle the screw ring, packing piece and the needle) by loosening of the screw, not removing it. When dismantling the head under pressure the thread on the head will be damaged. It could fly off and cause injury.
4. When preparing fruit creams, do not use fruit , but only fruit juices. Seeds and pulp will clog the dispenser.
5. Cream will stay fresh in the cream whipper if stored on the refrigerator.

Instructions for Bottle Dismantling and Assembly

Before the first and after every use dismantle the cream bottle into individual component parts with the following procedure.

1. Unscrew the head from the bottle by turning it to the left.
2. Unscrew the decorative extension piece and push back the valve from the head. Do not dismantle the valve packing.
3. Using the enclosed spanner unscrew the thread ring, take the packing piece and the needle out. Using the other side of the spanner unscrew the screw and remove the admission valve and seat sealing. After dismantling the cream whipper wash thoroughly and reassemble.

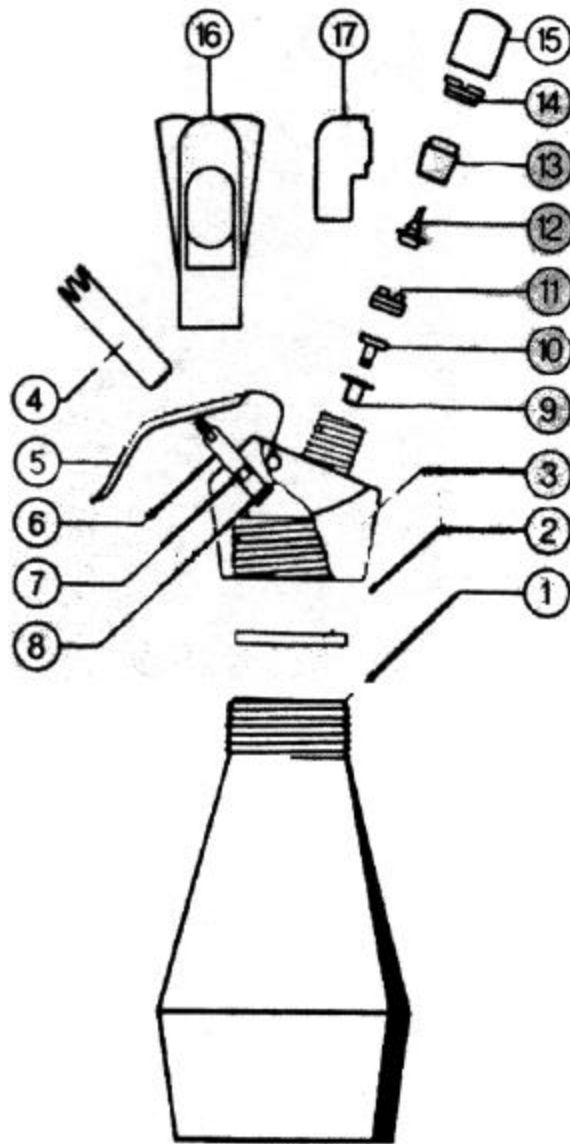
Trouble Shooting

<u>Problem</u>	<u>Cause</u>	<u>Solution</u>
No gas entering the bottle	Clogged needle	Dismantle and clean needle
	Worn out needle	Replace needle
	Bad packing	Replace packing pieces
Gas leaking through needle	Impurity on seat packing	Dismantle admission valve, Clean seat packing on the Bottom of the union nut
	Damaged seat packing	Replace
Cream leaks out under lever	Damaged packing ring	Dismantle the discharging valve, replace the ring
	Damaged valve packing	Replace the valve packing
After lever depression no cream leaks out	Clogged valve	Discharge the pressure by loosing of admission valve. Dismantle the discharging valve and clean it.

Description of Parts and Accessories

- 143-10-01 Bottle
- 143-10-02 Neck Packing- seals the head with the bottle
- 143-10-03 Head
- 143-10-04 Decorative Extension- with valve builds the discharging system of the bottle
- 143-10-05 Lever- serves for controlling of the valve
- 143-10-06 Valve-serves for whipped cream discharging-with longitudinal and cross discharging opening
- 143-10-07 Packing Ring- prevents whipped cream leakage around the valve.
- 143-10-08 Valve Packing-prevents leakage of whipped cream from bottle
- 143-10-09 Seat Packing-prevents gas leaking back from the bottle into the discharging mechanism
- 143-10-10 Admission Valve-strengthens the seat packing
- 143-10-11 Screw-fixes the admission valve
- 143-10-12 Needle-serves for puncturing the aluminum seal on the pressure gas cylinder neck
- 143-10-13 Packing piece-seals the cylinder nut during gas filling
- 143-10-14 Thread ring-serves for needle securing and safeguarding of the packing piece in the head screw fitting
- 143-10-15 Cap-protects the thread of the head screw fitting and the needle point from damage and soiling
- 143-10-16 Wing nut-forms a bushing for the cylinder during gas admission
- 143-10-17 Spanner-serves for dismantling and assembly of the thread ring and of the admission valve

Cream Bottle Diagram



For more information, please contact us:

[ExpotechUSA](#)
[10700 Rockley Road](#)
[Houston, Texas 77099](#)
[USA](#)

[281-496-0900 \[voice\]](#)

[281-496-0400 \[fax\]](#)

E-mail: sales@expotechusa.com

Website: www.ExpotechUSA.com