

PROTECTOR[®] FIBERGLASS ENCLOSURES for PCR and Tissue Culture



Protector[®] Fiberglass PCR Enclosures



Protector[®] Fiberglass Tissue Culture Enclosures

For more information, please contact us:

ExpotechUSA

10700 Rockley Road
Houston, Texas 77099
USA

281-496-0900 [voice]

281-496-0400 [fax]

E-mail: sales@expotechusa.com

Website: www.ExpotechUSA.com

Protector® Fiberglass PCR & Tissue Culture Enclosures

Protector Fiberglass PCR Enclosures provide a *non-ventilated*, circulation-free work area designed to reduce cross-contamination during PCR procedures. A spacious interior and convenient design give ample room for media preparation and bulky equipment.

After sterilization is complete, surface decontamination is maintained inside the enclosure with the built-in ultraviolet light. In addition, a UV light timer provides for decontamination control while the enclosure is unattended. Molded entirely of fiberglass-reinforced polyester, the interior of the Protector Fiberglass PCR Enclosures offers a smooth crevice-free work area with coved corners that is easy to clean.

Like the Protector PCR Enclosures, **Protector Fiberglass Tissue Culture Enclosures** provide a *non-ventilated*, circulation-free work area designed to reduce cross-contamination in laboratory applications. The Protector Tissue Culture Enclosures may be used for techniques such as tissue staining, culture growth and virus harvesting. A built-in ultraviolet light provides secondary surface decontamination while the enclosure is not in use.

Features and Benefits

Lightweight for easy installation.

Weighing only 80 pounds, the enclosure can be installed or moved with ease. Its benchtop design fits easily on a base cabinet, desk or lab cart.

Glare-free fluorescent lighting.

The enclosed interior is illuminated by a 30-watt fluorescent light mounted inside for a light, bright, non-glare working area.

Lift-up glass sash.

Maximum observation area is provided by a large 9.5" x 40" glass sash which helps to prevent exposure to ultraviolet rays. The sash panel is hinged and can be raised for front loading and easy cleaning.

Three-way light switch.

Both the fluorescent and ultraviolet lights are controlled by a single 3-way switch which powers only one light at a time, helping to protect the operator from UV exposure.

Bi-fold doors.

Fold completely back for full access to enclosure opening. May be closed when enclosure is not in use or during ultraviolet sterilization.

Smooth, easy-to-clean interior.

Molded, one-piece fiberglass-reinforced polyester interior is crevice-free for easy cleaning.

Ultraviolet germicidal light.

For secondary decontamination, the UV germicidal mercury lamp maintains the sterility of the enclosure.

Factory wired.

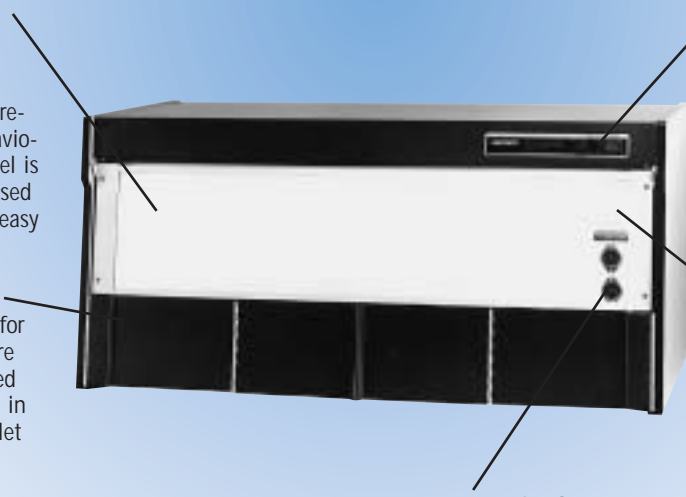
The Protector Enclosure is completely factory wired and furnished with a 3-wire cord and plug. The Protector PCR Enclosure is equipped with two outlets for powering electrical equipment inside the enclosure. The Protector Tissue Culture Enclosure is equipped with one outlet.

UV light timer (Protector PCR Enclosures only).

Continuous or timed control up to 4 hours is provided when the UV light is activated.

Supporting Base Accessories.

Mobile Base Stand and Hydraulic Lift Adjustable Height Base Stands are available to support the Protector PCR Enclosure. See the back page for ordering information.



Technical Specifications

5102000 Protector PCR Enclosure

Cabinet. 45.25" w x 23.75" d x 20.88" high (114.9 cm x 60.3 cm x 53 cm). Interior shall be one-piece, molded fiberglass. Exterior shall have side walls of phenolic/melamine laminate and top, back and lower access opening bi-fold doors of epoxy-coated steel. Color shall be glacier white and charcoal. **A supporting work surface and base cabinetry or stand shall be required (not included).**

Electrical. Wired for operation on 115 volts, 12 amps, 60 Hz AC. Enclosure shall include two 115 volt polarized and grounded electrical outlets rated for 8 amps total maximum, one 30-watt fluorescent light and one 36-inch 2537 Angstrom germicidal ultraviolet light (both lights to operate from the same three-way safety switch). Enclosure shall include a timer which shall allow for continuous ultraviolet light use or timed ultraviolet light control up to 4 hours. A 9-foot, 3-wire electrical cord with plug shall be provided.

Sash. A hinged, 1/4-inch tempered glass viewing panel with 6.25" access opening shall be included.

Shipping weight 100 lbs. (45.4 kg)

*5102002 Protector PCR Enclosure

Specifications shall be the same as for 5102000 except for the following:

Electrical. Wired for operation on 230 volts, 10 amps, 50 Hz AC. Enclosure shall include two 230 volt polarized and grounded electrical outlets rated for 8 amps total maximum. A 9-foot, 3-wire electrical cord with IEC plug shall be provided.

*International electrical configuration

WARNING: Protector PCR Enclosures are non-ventilated, circulation-free enclosures. They are not suitable for biohazardous, toxic or volatile procedures. Because there is no exhaust system in these enclosures, continuous flame or high heat sources should not be used.

5100000 Protector Tissue Culture Enclosure

Cabinet. 45.25" w x 23.75" d x 20.88" high (114.9 cm x 60.3 cm x 53 cm). Interior shall be one-piece, molded fiberglass. Exterior shall have side walls of phenolic/melamine laminate and top, back and lower access opening bi-fold doors of epoxy-coated steel. Color shall be glacier white and charcoal. **A supporting work surface and base cabinetry or stand shall be required (not included).**

Electrical. Wired for operation on 115 volts, 10 amps, 60 Hz AC. Enclosure shall include one 115 volt polarized and grounded electrical outlet rated for 8 amps total maximum, one 30-watt fluorescent light and one 36-inch 2537 Angstrom germicidal ultraviolet light (both lights to operate from the same three-way safety switch). A 15-foot, 3-wire electrical cord with plug shall be provided.

Sash. A hinged, 1/4" tempered glass viewing panel with 6.25" access opening shall be included.

Shipping weight 100 lbs. (45.4 kg)

*5100002 Protector Tissue Culture Enclosure

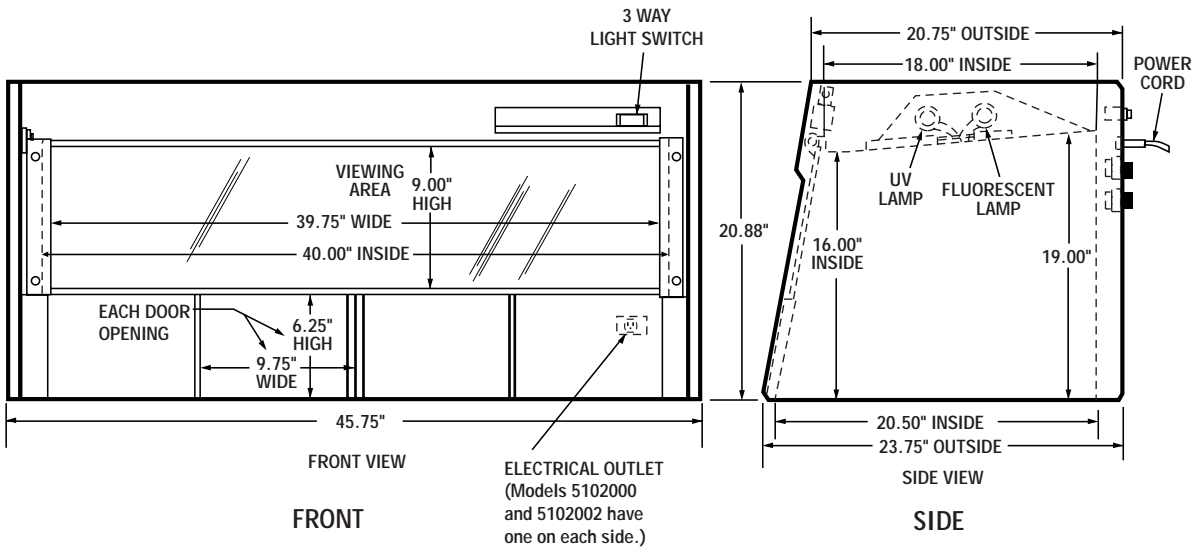
Specifications shall be the same as for 5100000 except for the following:

Electrical. Wired for operation on 230 volts, 10 amps, 50 Hz AC. Enclosure shall include one 230 volt polarized and grounded electrical outlet rated for 8 amps total maximum. A 15-foot, 3-wire electrical cord with IEC plug shall be provided.

*International electrical configuration

WARNING: Protector Tissue Culture Enclosures are non-ventilated, circulation-free enclosures. They are not suitable for biohazardous, toxic or volatile procedures. Because there is no exhaust system in these enclosures, continuous flame or high heat sources should not be used.

Dimensional Data



Accessories



8060000 Mobile Bench

8060000 Mobile Bench

Supports Protector Fiberglass Enclosures. 48" w x 24" d x 37.19" high (122 cm x 61 cm x 94.5 cm). Has corrosion-resistant epoxy-coated, 18 gauge steel, 2-inch square frame and 5-inch diameter ball-bearing casters with toe operated locks. Moves freely with loads up to 540 pounds. Work surface is melamine laminated.

Shipping weight 111 lbs. (50.3 kg)



3780401 Manual Hydraulic Lift Adjustable Height Base Stand

Hydraulic Lift Adjustable Height Base Stands and Flat Work Surface

Support Protector Fiberglass Enclosures. Infinitely adjustable height from 25.5" to 33.5" to accommodate persons of different heights and wheelchair-bound users. Durable 1.75" tubular, epoxy-coated steel frame. Sub-frame is 2.0" x 3.0". Includes die-cast feet with levelers. Available with an electric lift with up/down switch or a manual lift with a hand crank. Caster Kit adds mobility to the stand. **Work surface is required.** Solid Epoxy Flat Work Surface 4882803 (see below) is recommended.

Catalog #	Description	Shipping Weight
3780304	Electric Hydraulic Lift Base Stand, 48" w x 29" d (122 x 74.7 cm)	120 lbs. (54 kg)
3780401	Manual Hydraulic Lift Base Stand, 48" w x 29" d (122 x 74.7 cm)	120 lbs. (54 kg)
3784000	Caster Kit includes four 5" diameter, non-marking polyurethane casters	10 lbs. (4.5 kg)
4882803	Flat Work Surface, solid epoxy, 48" w x 30" d x 1.25" thick (122 x 76.2 x 3.2 cm)	110 lbs. (50 kg)

For more information, please contact us:

ExpotechUSA

10700 Rockley Road
Houston, Texas 77099
USA

281-496-0900 [voice]

281-496-0400 [fax]

E-mail: sales@expotechusa.com

Website: www.ExpotechUSA.com