

Snuffer – Model 1115000, 1115002, 1115003, 1115004 Internal Hood Depths of 30", 36", & 48"

1. On hoods 4 Ft, 5 Ft and 6 Ft in width, locate the unit at the centerline of the hood per Fig. 1. Hoods 8 Ft and greater require additional units and should be mounted equal distance in the hood behind the light assembly shown in Fig. 1. **NOTE:** Protruding discharge nozzle should have an unobstructed discharge at the desired protection zone inside the fume hood.
2. Drill holes per detail "A" of Fig. 1.

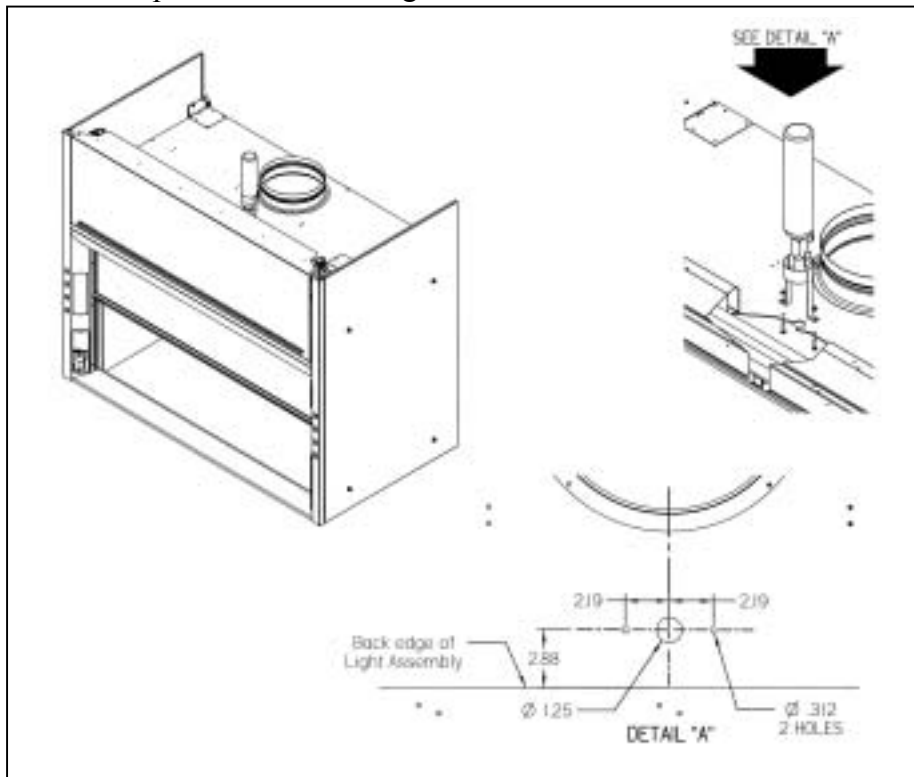


Figure 1

3. Mount pedestal bracket with 1/4" stainless steel bolts enclosed. Extinguisher nozzle should be centered over 1-3/4" diameter hole.
4. Attach extinguisher fusible link tip to unit by threading into gauge nozzle. **NOTE:** Unit will not be operational until this tip is re-attached. Use care so as not to damage link or screw threads.
5. Check extinguisher gauge for charge. Indicator should be in "Green" range.

6. If fuse tip is exposed to corrosive atmospheres, cover with small polyethylene bag and secure with elastic band for additional protection.

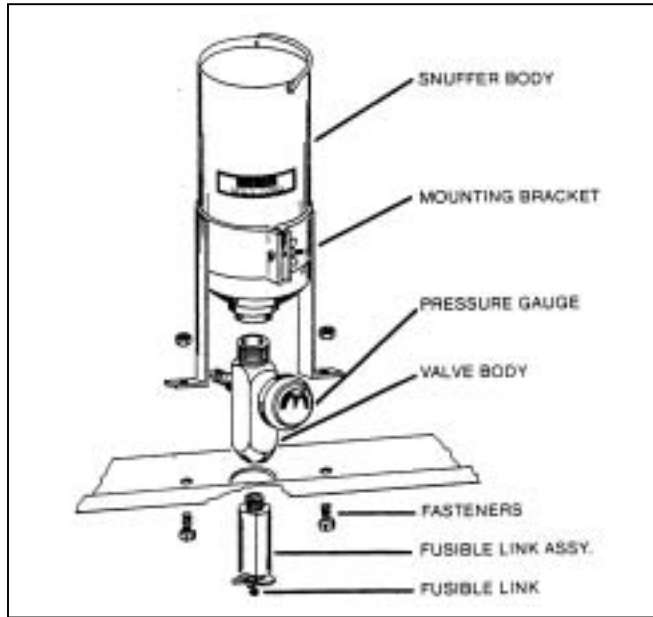


Figure 2

Snuffer – Model 1115002 – Internal Hood Depths of 30", 36" and 48"

Installation-

1. On hoods 4 Ft, 5 Ft and 6 Ft in width, locate one unit on the centerline of the hood per Fig. 3. Hoods 8 Ft and greater require additional units and should be mounted equal distance behind the light assembly. **NOTE:** Protruding discharge nozzle should have an unobstructed discharge at the desired protection zone.

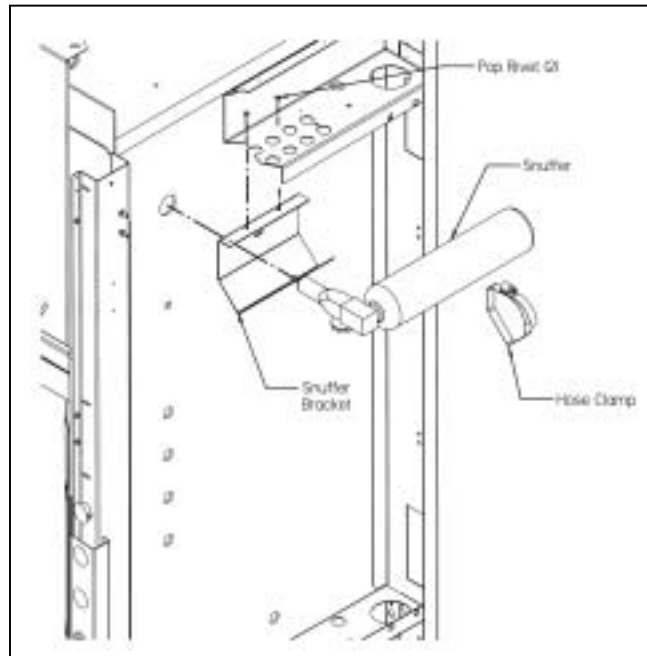


Figure 3

2. Drill a 1.375 diameter hole per Fig. 4.

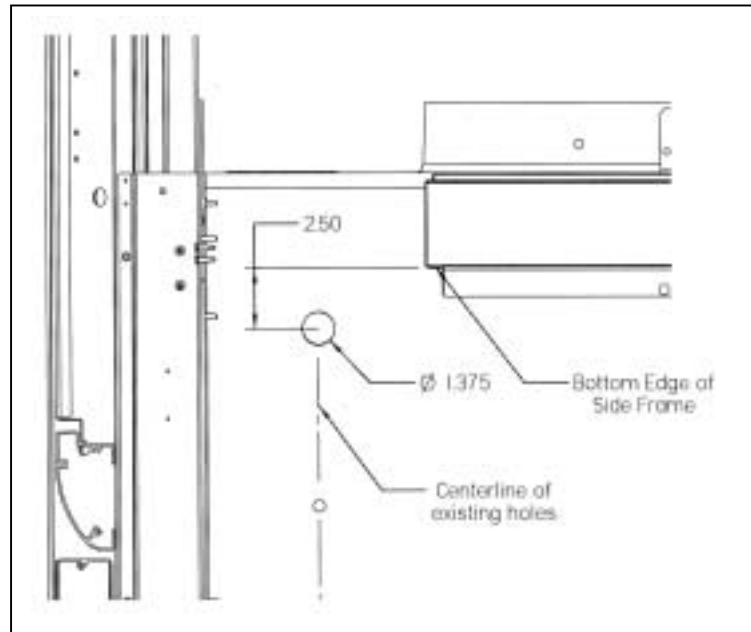


Figure 4

3. Mount pedestal bracket with 1/4" stainless steel bolts enclosed. Extinguisher nozzle should be centered over 1-3/4" diameter hole.
4. Attach extinguisher fusible link tip to unit by threading into gauge nozzle. **NOTE:** Unit will not be operational until this tip is re-attached. Use care so as not to damage link or screw threads.
5. Check extinguisher gauge for charge. Indicator should be in "Green" range.
6. Place the snuffer in the snuffer bracket and secure with the hose clamp provided with your unit. The nozzle of the snuffer should be centered over 1-3/8" diameter hole before tightening the clamp.
7. If fuse tip is exposed to corrosive atmospheres, cover with small polyethylene bag and secure with elastic band.

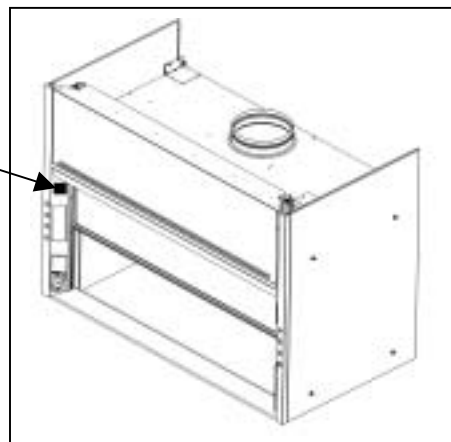
CAUTION: The fusible link assembly has been shipped installed on this Snuffer unit; be sure and check for any signs of leakage or damage to the nozzle area that could possibly cause accidental discharge.

This linkage assembly has to be rethreaded in position on the Snuffer upon completion of installation so as to make it fully operational. The linkage assembly and Snuffer must be installed as oriented for it to operate correctly.

THIS FIRE EXTINGUISHER LABEL SHOULD BE AFFIXED
TO THE FRONT OF THE HOOD

NOTICE

- THIS FUME HOOD IS EQUIPPED WITH AN **AUTOMATIC FIRE EXTINGUISHER** WITH A TEMPERATURE SENSING FUSE SET TO DISCHARGE AT **165°F**.
- TO PREVENT INADVERTENT DISCHARGE OF EXTINGUISHER WHEN CONDUCTING TESTS THAT GENERATE **HIGH TEMPERATURES**:
- **DO** – BE SURE THAT EXHAUST **BLOWER** IS ON AND EXHAUST DUCT IS OPEN
- **DO** – TURN OFF HEAT SOURCE AND ALLOW INTERIOR OF HOOD TO **COOL** BEFORE TURNING OFF EXHAUST BLOWER



Maintenance

Because the Snuffer features no electrical or plumbing connections for its everyday operation, maintenance on the product is quite simple. Periodic visual inspection of the pressure gauge and a visual inspection of the linkage assembly are all that is needed. Should corrosion start to attack the linkage assembly located inside of a corrosive area, one would simply place a small plastic bag over the linkage assembly to protect it from corrosion but it would still be able to measure the heat and perform properly.

Warranty-

We are committed to providing our customers with quality equipment and service after the sale. Part of this objective involves keeping you informed of changes and new product additions.

Labconco provides a warranty on all parts and factory workmanship. The warranty includes areas of defective material and workmanship, provided such defect results from normal and proper use of the equipment.

The warranty for all Labconco products will expire one year from date of installation or two years from date of shipment from Labconco, whichever is sooner, except the following:

- Purifier® Delta™ Series Biological Safety Cabinets and PuriCare™ Lab Animal Products, carry a three-year warranty from date of installation or four years from date of shipment from Labconco, whichever is sooner.
- Carts carry a lifetime warranty.
- Glassware is not warranted from breakage when dropped or mishandled.

This limited warranty covers parts and labor, but not transportation and insurance charges. In the event of a warranty claim, contact Labconco Corporation or the dealer who sold you the product. If the cause is determined to be a manufacturing fault, the dealer or Labconco Corporation will repair or replace all defective parts to restore the unit to operation. Under no circumstances shall Labconco Corporation be liable for indirect, consequential, or special damages of any kind. This statement may be altered by a specific published amendment. No individual has authorization to alter the provisions of this warranty policy or its amendments. Lamps and filters are not covered by this warranty. Damage due to corrosion or accidental breakage is not covered.

WARNING: Various federal, state or local regulations may govern the disposal and/or emission of substances used in connection with this equipment. All users of this equipment are urged to become familiar with any regulations that apply in the user's area concerning the dumping of waste materials in or upon water, land or air and to comply with such regulations.

Shipping Claims-

If a shipment is received in visibly damaged condition, be certain to make a notation on the delivering carrier's receipt and have his agent confirm the damage on your receipt. Otherwise, the damage claim may be refused.

If concealed damage or pilferage is discovered, notify the carrier immediately and retain the entire shipment intact for inspection. Interstate Commerce Commission rules requires that the claim be filed with the carrier within 15 days after delivery.

NOTE: Do not return goods. Goods returned without prior authorization will not be accepted. Labconco Corporation and its dealers are not responsible for shipping damage. The recipient must file claims directly with the freight carrier. If authorization has been received to return this product, by accepting this approval, the user assumes all responsibility and liability for biological and chemical decontamination and cleansing. Labconco reserves the right to refuse delivery of any products that do not appear to have been properly cleaned and/or decontaminated prior to return.

For more information, please contact us:

[ExpotechUSA](#)
[10700 Rockley Road](#)
[Houston, Texas 77099](#)
[USA](#)

[281-496-0900 \[voice\]](#)

[281-496-0400 \[fax\]](#)

E-mail: sales@expotechusa.com

Website: www.ExpotechUSA.com